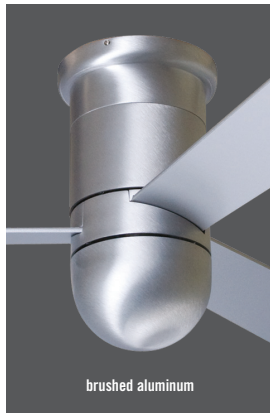


# cirrus hugger

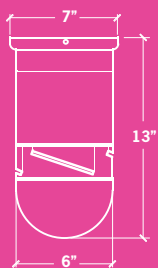
## energy information (52" at high speed)

airflow <b>6550</b> cubic feet per minute	electricity use <b>87</b> watts (excludes lights)	airflow efficiency <b>75</b> cubic feet per minute per watt
-------------------------------------------------	------------------------------------------------------------	----------------------------------------------------------------------



tel 541-482-8545  
www.modernfan.com

**cirrus hugger special notes** 1. The #350 light kit adds 2-inches to length of this fan. 2. The #352/#353 light kit adds 3-inches to the overall length of this fan.



## cirrus hugger

Ships in 13" overall configuration.

# CIR-HUG-	finish	blade diameter	blade color	light option	control option	
↑	↑	↑	↑	↑	↑	
<b>GW</b>	gloss white	<b>52</b>	52" span	<b>NL</b>	no control	
<b>BA</b>	brushed aluminum	<b>42</b>	42" span	<b>350</b>	50w GU10 halogen	
		<b>36</b>	36" span	<b>352</b>	75w G9 halogen	
				<b>353</b>	26w GU24 energy saving cfl	
			<b>WH</b>	white	<b>NC</b>	no control
			<b>AL</b>	aluminum	<b>001</b>	fan speed only
			<b>MP</b>	maple	<b>002</b>	fan & light - 3 wire
					<b>003</b>	handheld remote
					<b>004</b>	fan & light - 2 wire
					<b>005</b>	wall/remote combo